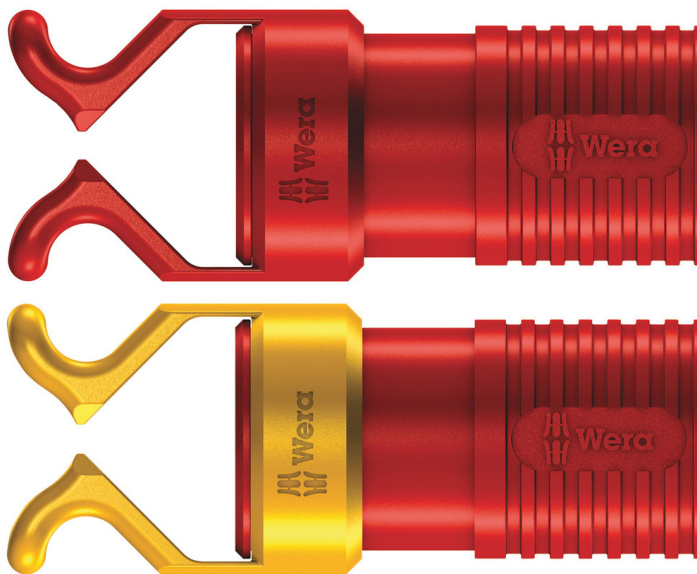


## 1440/1442 Screw gripper set, 2 pieces

### Accessories



<b>EAN:</b>	4013288140340	<b>Size:</b>	165x60x24 mm
<b>Part number:</b>	05073680001	<b>Weight:</b>	17 g
<b>Article number:</b>	1440/1442	<b>Country of origin:</b>	CZ
		<b>Customs tariff number:</b>	39269097

- Screw gripper set
- Attachment tool with holding function for screws
- Holds all screw profiles and sizes securely on the tool
- Made out of stable, elastomer material

Screw gripper set: attachment tool with holding function for screws. Holds all screw profiles securely on the tool. During the job, the gripper can be pushed up along the blade so that it is not in the way when working with low-lying screws.

#### Web link

[https://products.wera.de/en/screwdrivers\\_accessories\\_1440\\_1442.html](https://products.wera.de/en/screwdrivers_accessories_1440_1442.html)

Wera - 1440/1442  
05073680001 - 4013288140340

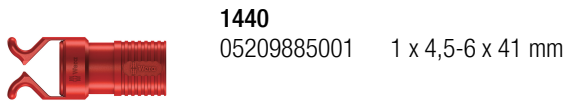
Wera Werkzeuge GmbH  
Korzter Straße 21-25  
D-42349 Wuppertal  
Tel: +49 (0)2 02 / 40 45-0  
E-Mail: [info@wera.de](mailto:info@wera.de)

# 1440/1442 Screw gripper set, 2 pieces

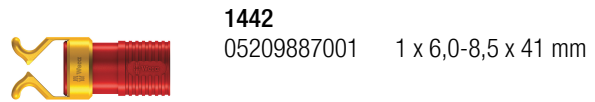


## Accessories

### Set contents:

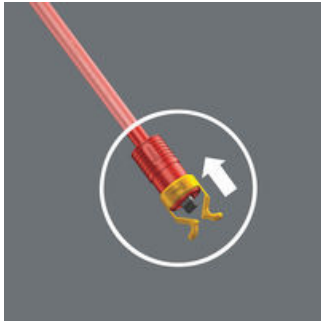


**1440**  
05209885001 1 x 4,5-6 x 41 mm



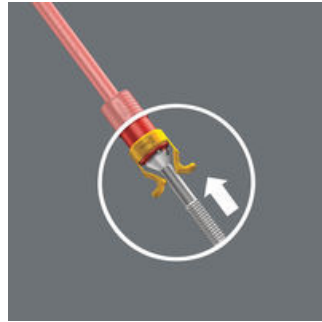
**1442**  
05209887001 1 x 6,0-8,5 x 41 mm

### And this is how the gripper works



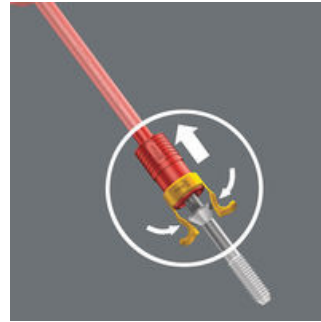
Push the screw gripper onto the tip of the screwdriver until the end of the blade protrudes from the rubber blade holder.

### And this is how the gripper works



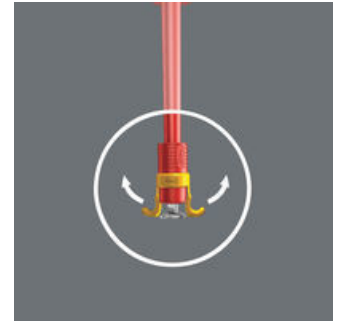
Attach the screw to the tip of the blade and secure it in the screw gripper.

### And this is how the gripper works



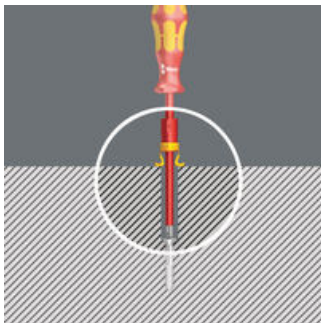
Pull the screw gripper towards the screwdriver handle until the two arms of the gripper sit against the head of the screw and are spread slightly apart. The Wera screw gripper releases the screw automatically after it has been fastened.

### And this is how the gripper works



The two gripper arms spread further apart as they are pushed against the surface and automatically snap back when the head of the screw is countersunk.

### And this is how the gripper works



When fastening screws in blind holes the screw gripper is pushed back, making it possible to reach even deep-seated screws.

### Web link

[https://products.wera.de/en/screwdrivers\\_accessories\\_1440\\_1442.html](https://products.wera.de/en/screwdrivers_accessories_1440_1442.html)

Wera - 1440/1442  
05073680001 - 4013288140340

Wera Werkzeuge GmbH  
Korzter Straße 21-25  
D-42349 Wuppertal  
Tel: +49 (0)2 02 / 40 45-0  
E-Mail: [info@wera.de](mailto:info@wera.de)