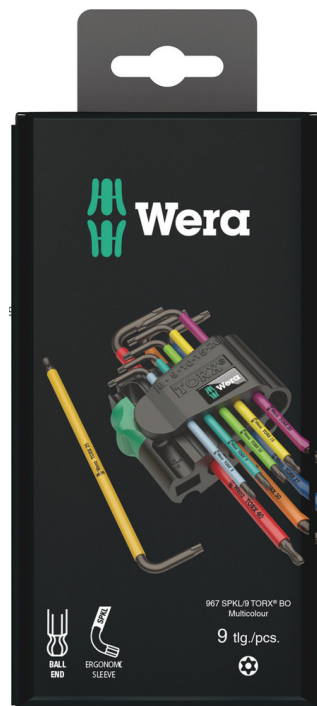


967/9 TX BO Multicolour 1 SB L-key set for tamper-proof TORX® screws,  
BlackLaser, 9 pieces  
L-Keys for TORX® Screws



<b>EAN:</b>	4013288170125	<b>Size:</b>	150x80x30 mm
<b>Part number:</b>	05073599001	<b>Weight:</b>	245 g
<b>Article number:</b>	967/9 TX BO Multicolour 1 SB SiS	<b>Country of origin:</b>	CZ
		<b>Customs tariff number:</b>	82041100

- L-keys for TORX® BO screws to loosen safety connections
- Colour coded, easy-to-grip plastic sleeve, even at low temperatures
- BlackLaser tempered offers optimum surface protection for a long service life
- The ballpoint allows offset working
- Wear-resistant inscription of the sizes of the L-keys contained on the clip

L-keys with thermoplastic sleeve (SPKL) out of easy-to-grip circular material. The sleeve ensures that work is pleasant and easy on the fingers even at low temperatures. All L-keys are quickly to hand thanks to their colour coding and size markings. The wear-resistant clip material ensures secure storage of the L-keys as well as simple removal. For TORX® and TORX® BO (with bore hole) connections.

**Web link**

[https://products.wera.de/en/l-keys\\_l-keys\\_for\\_torx\\_screws\\_967\\_9\\_tx\\_bo\\_multicolour\\_1\\_sb\\_sis.html](https://products.wera.de/en/l-keys_l-keys_for_torx_screws_967_9_tx_bo_multicolour_1_sb_sis.html)

Wera - 967/9 TX BO Multicolour 1 SB SiS  
05073599001 - 4013288170125

Wera Werkzeuge GmbH  
Korzter Straße 21-25  
D-42349 Wuppertal  
Tel: +49 (0)2 02 / 40 45-0  
E-Mail: [info@wera.de](mailto:info@wera.de)

**967/9 TX BO Multicolour 1 SB L-key set for tamper-proof TORX® screws,  
BlackLaser, 9 pieces  
L-Keys for TORX® Screws**

**Set contents:**



**967 SPKL TORX® BO Multicolour**

05024351001 <sup>1)</sup>	1 x TX 9 x 79 mm
05024350001 <sup>1)</sup>	1 x TX 8 x 76 mm
05024352001 <sup>2)</sup>	1 x TX 10 x 85 mm
05024353001	1 x TX 15 x 90 mm
05024354001	1 x TX 20 x 96 mm
05024355001	1 x TX 25 x 104 mm
05024357001	1 x TX 30 x 122 mm
05024358001	1 x TX 40 x 132 mm
05024356001	1 x TX 27 x 112 mm

1) Product without bore hole at the short and without ball-end at the long arm.

2) Product without ball-end at the long arm.

**TORX® with borehole (BO)**



L-key for TORX® socket screws with safety pin



TORX® tools with a borehole prevent the unauthorised unfastening of safety screws. The screws contain a pin that protrudes into the drive profile so that "normal" TORX® tools cannot be used. This pin fits into the borehole of TORX® BO tools allowing safety screws to be unfastened.

**TORX® ball tip**



The spherical drive profile means that it is possible to swivel the axis of the tool to that of the screw, and therefore enable angled, "around-the-corner" screwdriving jobs.

**Magnetiser/Demagnetiser**



For recessed screws, it's often advantageous for the screw to be held on the L-key by magnetic force. The Wera clips with magnetiser/demagnetiser enable a magnetisation/demagnetisation of L-keys in a flash.

**Web link**

[https://products.wera.de/en/l-keys\\_l-keys\\_for\\_torx\\_screws\\_967\\_9\\_tx\\_bo\\_multicolour\\_1\\_sb\\_sis.html](https://products.wera.de/en/l-keys_l-keys_for_torx_screws_967_9_tx_bo_multicolour_1_sb_sis.html)

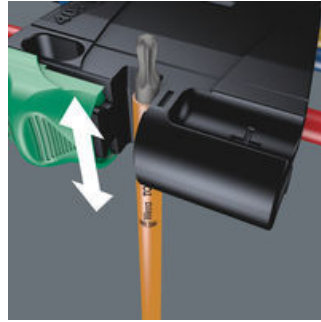
Wera - 967/9 TX BO Multicolour 1 SB SiS  
05073599001 - 4013288170125

Wera Werkzeuge GmbH  
Korzter Straße 21-25  
D-42349 Wuppertal  
Tel: +49 (0)2 02 / 40 45-0  
E-Mail: info@wera.de

**Magnetising**



**Demagnetising**



**Size identification**



The size of each L-keys has been engraved by a laser. In addition Take it easy L-keys have a colour coding according to sizes – for simple and rapid accessing of the required tool. Making it easy to find the right tool.

**Secure hold and easy removal**



The wear-resistant clip material ensures that the L-keys are securely held yet are easy to remove.

**Web link**

[https://products.wera.de/en/l-keys\\_l-keys\\_for\\_torx\\_screws\\_967\\_9\\_tx\\_bo\\_multicolour\\_1\\_sb\\_sis.html](https://products.wera.de/en/l-keys_l-keys_for_torx_screws_967_9_tx_bo_multicolour_1_sb_sis.html)

Wera - 967/9 TX BO Multicolour 1 SB SiS  
05073599001 - 4013288170125

Wera Werkzeuge GmbH  
Korzter Straße 21-25  
D-42349 Wuppertal  
Tel: +49 (0)2 02 / 40 45-0  
E-Mail: [info@wera.de](mailto:info@wera.de)