

352 Ball end screwdriver for hexagon socket screws, 1.5 x 60 mm

Screwdrivers Kraftform Plus – Series 300



EAN: 4013288032577
Part number: 05022795001
Article number: 352

Size: 130x22x22 mm
Weight: 19 g
Country of origin: CZ
Customs tariff number: 82054000



- Hexagonal ballpoint screwdriver
- Multi-component Kraftform handle for fast and ergonomic screwdriving
- Take it easy tool finder: colour coding according to profile and size
- Hexagonal blade and ballpoint for secure working even in difficult installation situations
- The Wera Black Point tip offers an exact fit and optimum corrosion protection

High quality Kraftform Plus screwdriver. Multi-component Kraftform handle for fast and low-fatigue working. Kraftform Plus: hard gripping zones for high working speeds whereas soft zones ensure high torque transfer. The ballpoint drive profile means that it is possible to swivel the tool axis away from the screwdriving axis, thus enabling "round the corner" screwdriving. "Take it easy" tool finder with colour coding according to profiles and size stamp – for simple and rapid accessing of the required tool. The hexagonal anti-roll feature prevents any bothersome rolling away at the workplace.

Web link

https://products.wera.de/en/screwdrivers_kraftform_plus_series_300_352.html

Wera - 352
05022795001 - 4013288032577

Wera Werkzeuge GmbH
Korzter Straße 21-25
D-42349 Wuppertal
Tel: +49 (0)2 02 / 40 45-0
E-Mail: info@wera.de

Screwdrivers Kraftform Plus – Series 300

Ball tip



Kraftform Plus screwdrivers – ergonomics you can grasp. They relieve the entire hand-arm system even when used intensively. Along with other technical and product advantages such as the Lasertip for a secure fit in the screw head, Kraftform screwdrivers are the ideal choice whenever manual screwdriving jobs are concerned.



The spherical drive profile means that it is possible to swivel the axis of the tool to that of the screw, and therefore enable angled, "around-the-corner" screwdriving jobs.

Kraftform



The basic idea for the prototype of the Kraftform handle – that the hand should dictate the design – has, right through to today, proved to be correct. In cooperation with the internationally recognised Fraunhofer IAO Institute, Wera developed a screwdriver handle designed to match the shape of the human hand as long ago as the 1960s. After a long development phase, the Wera Kraftform handle was launched to the market in 1968. It has been optimised through the years with new technologies, but has kept its proven shape. After all, the human hand has not changed either.

Rapid hand repositioning



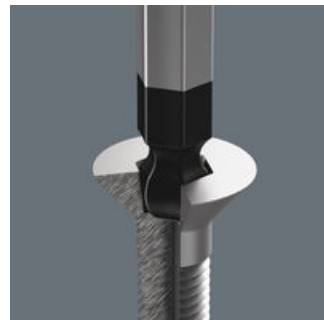
The hard materials used for the handle ensure rapid hand repositioning without any danger of the skin "sticking" to the handle. The surrounding hard zones with large diameters glide like wheels across the hand.

Large contact area



The large contact area – with particularly high friction to the soft zones – results in high torque transfer without any bruising from the edges.

Wera Black Point tip



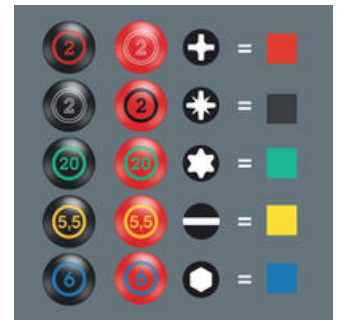
The Wera Black Point tip and a refined hardening process ensure long service life of the tip, improved corrosion protection and an exact fit.

Non-roll feature



The hexagonal non-roll feature prevents any rolling away at the workplace.

"Take it easy" Tool Finder



Screwdrivers with "Take it easy" tool finder: colour coding according to profile and size stamp.

Web link

https://products.wera.de/en/screwdrivers_kraftform_plus_series_300_352.html

Wera - 352

05022795001 - 4013288032577

Wera Werkzeuge GmbH

Korzter Straße 21-25

D-42349 Wuppertal

Tel: +49 (0)2 02 / 40 45-0






E-Mail: info@wera.de

352 Ball end screwdriver for hexagon socket screws, 1.5 x 60 mm

Screwdrivers Kraftform Plus – Series 300



Further versions in this product family:

	 mm	 inch	 mm	 mm	 inch
05022795001	1.5		60	70	2 3/8
05022800001	2.0		100	70	4
05138070001	2.5		100	81	4
05022805001	3.0		100	81	4
05022810001	4.0		100	98	4
05022815001	5.0		100	105	4
05022820001	6.0		125	105	5
05022825001	8.0		150	112	6
05022830001	10.0		150	112	6
05022835001	12.0		150	117	6
05022905001		5/32"	100	98	4
05022910001		3/16"	100	105	4
05022915001		7/32"	100	105	4
05022920001		1/4"	125	105	5
05022925001		5/16"	150	112	6
05022930001		3/8"	150	112	6
05022935001		1/2"	150	117	6

Web link

https://products.wera.de/en/screwdrivers_kraftform_plus_series_300_352.html

Wera - 352

05022795001 - 4013288032577

Wera Werkzeuge GmbH

Körzter Straße 21-25

D-42349 Wuppertal

Tel: +49 (0)2 02 / 40 45-0

E-Mail: info@wera.de