

# 950/9 Hex-Plus 4 L-key set, metric, chrome-plated, 9 pieces

## L-Keys for Hexagon Socket Screws



<b>EAN:</b>	4013288139177	<b>Size:</b>	245x95x30 mm
<b>Part number:</b>	05073594001	<b>Weight:</b>	464 g
<b>Article number:</b>	950/9 Hex-Plus 4	<b>Country of origin:</b>	CZ
		<b>Customs tariff number:</b>	82041100

- Extra-short arm for use on difficult-to-access screws
- Hex-Plus allows socket head screws to live longer
- The ballpoint on the long arm allows dependable working even in difficult situations
- Chrome-plated for high corrosion protection
- In a practical clip out of wear-free material

High quality L-key set with extra-short arm for use on difficult-to-access screws. For hexagon socket screws. Hex-Plus offers a greater contact surface in the head of the screw. The notching effect is therefore reduced to a minimum and damage to the screw head more or less eliminated. The ballpoint on the long arm allows dependable working even in difficult installation situations. The precise chrome-plated design ensures high corrosion protection. Laser-engraved and thereby wear-resistant size markings on the L-keys for rapid accessing. Come in a practical clip fastener, whose wear-free material provides secure storage for the L-keys and enables simple removal.

### Web link

[https://products.wera.de/en/l-keys\\_l-keys\\_for\\_hexagon\\_socket\\_screws\\_950\\_9\\_hex-plus\\_4.html](https://products.wera.de/en/l-keys_l-keys_for_hexagon_socket_screws_950_9_hex-plus_4.html)

Wera - 950/9 Hex-Plus 4  
05073594001 - 4013288139177

Wera Werkzeuge GmbH  
Korzter Straße 21-25  
D-42349 Wuppertal  
Tel: +49 (0)2 02 / 40 45-0  
E-Mail: [info@wera.de](mailto:info@wera.de)

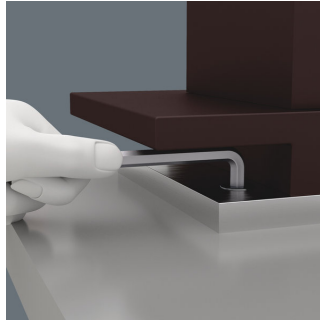
## L-Keys for Hexagon Socket Screws

### L-Keys



We questioned the classic L-key design, since all too often the screw head recess is rounded out, meaning screws can no longer be tightened or loosened – and so the user finds the L-key slipping out of the recess. Wera Hex-Plus tools have a larger contact surface in the screw head. The notching effects are reduced and thereby the deformation of the screws. At the same time, as much as 20 % more torque can be applied.

### With extra short arm



All users will recognise the need to saw or grind down L-keys to make them shorter for particularly confined screwdriving jobs. This has the disadvantage that they no longer have any corrosion protection at the separation point and secondly, they can become "soft" and therefore useless due to an alteration in the hardening during the shortening process.

### Hex-Plus



Hexagon screws can endure a problem because the contact surfaces delivering the power from the conventional tool, is transferred to the screw via very small surface areas. The consequence: the screw can become damaged (rounding out). Hex-Plus tools have a greater contact surface that prevents this from happening! At the same time, as much as 20 % more torque can be applied. Good to know: Hex-Plus tools fit into every standard hexagon socket screw!

### Ball tip



The spherical drive profile means that it is possible to swivel the axis of the tool to that of the screw, and therefore enable angled, "around-the-corner" screwdriving jobs.

### Size identification



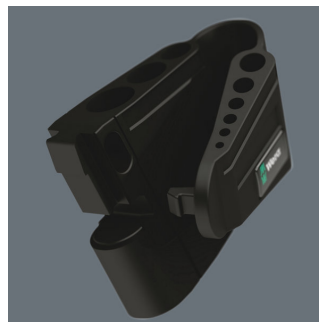
The size of each L-keys has been engraved by a laser. In addition Take it easy L-keys have a colour coding according to sizes – for simple and rapid accessing of the required tool. Making it easy to find the right tool.

### Surface protection



Chrome-plated hexagon L-keys for outstanding surface protection and long service life. High corrosion protection.

### Secure hold and easy removal



The wear-resistant clip material ensures that the L-keys are securely held yet are easy to remove.

### Web link

[https://products.wera.de/en/l-keys\\_l-keys\\_for\\_hexagon\\_socket\\_screws\\_950\\_9\\_hex-plus\\_4.html](https://products.wera.de/en/l-keys_l-keys_for_hexagon_socket_screws_950_9_hex-plus_4.html)

Wera - 950/9 Hex-Plus 4  
05073594001 - 4013288139177

Wera Werkzeuge GmbH  
Korzter Straße 21-25  
D-42349 Wuppertal  
Tel: +49 (0)2 02 / 40 45-0  
E-Mail: [info@wera.de](mailto:info@wera.de)