

L-Keys for Hexagon Socket Screws



EAN:	4013288112255	Size:	135x78x25 mm
Part number:	05133163001	Weight:	265 g
Article number:	950/9 Hex-Plus 3	Country of origin:	CZ
		Customs tariff number:	82041100

- L-keys for hexagonal socket screws
- Hex-Plus allows socket head screws to live longer
- High corrosion protection thanks to chrome-plating
- L-keys are quickly to hand thanks to their size markings
- Wear-resistant clip material for enhanced durability

High quality L-key with extra-short arm for use on difficult-to-access screws; for hexagon socket screws. The wear-free clip material ensures secure storage of the L-keys as well as simple removal. The Hex-Plus profile offers a greater contact surface in the head of the screw. The notching effect is therefore reduced to a minimum and damage to the screw head more or less eliminated. The ballpoint on the long arm allows dependable working even in difficult installation situations. The precise chrome-plated design ensures high corrosion protection. Laser-engraved and thereby wear-resistant size markings on the L-keys for rapid accessing.

Web link

https://products.wera.de/en/l-keys_l-keys_for_hexagon_socket_screws_950_9_hex-plus_3.html

Wera - 950/9 Hex-Plus 3
05133163001 - 4013288112255

Wera Werkzeuge GmbH
Korzter Straße 21-25
D-42349 Wuppertal
Tel: +49 (0)2 02 / 40 45-0
E-Mail: info@wera.de

L-Keys for Hexagon Socket Screws

Set contents:



950 PKS

05133150001 ¹⁾	1 x 1,5 x 50 mm
05133151001	1 x 2 x 56 mm
05133152001	1 x 2,5 x 63 mm
05133153001	1 x 3 x 71 mm
05133154001	1 x 4 x 80 mm
05133155001	1 x 5 x 90 mm
05133156001	1 x 6 x 100 mm
05133157001	1 x 8 x 112 mm
05133158001	1 x 10 x 125 mm

1) Regular hexagon

L-Keys



We questioned the classic L-key design, since all too often the screw head recess is rounded out, meaning screws can no longer be tightened or loosened – and so the user finds the L-key slipping out of the recess. Wera Hex-Plus tools have a larger contact surface in the screw head. The notching effects are reduced and thereby the deformation of the screws. At the same time, as much as 20 % more torque can be applied.

Hex-Plus



Hexagon screws can endure a problem because the contact surfaces delivering the power from the conventional tool, is transferred to the screw via very small surface areas. The consequence: the screw can become damaged (rounding out). Hex-Plus tools have a greater contact surface that prevents this from happening! At the same time, as much as 20 % more torque can be applied. Good to know: Hex-Plus tools fit into every standard hexagon socket screw!

Ball tip



The spherical drive profile means that it is possible to swivel the axis of the tool to that of the screw, and therefore enable angled, "around-the-corner" screwdriving jobs.

Size identification



The size of each L-keys has been engraved by a laser. In addition Take it easy L-keys have a colour coding according to sizes – for simple and rapid accessing of the required tool. Making it easy to find the right tool.

Web link

https://products.wera.de/en/l-keys_l-keys_for_hexagon_socket_screws_950_9_hex-plus_3.html

Wera - 950/9 Hex-Plus 3
05133163001 - 4013288112255

Wera Werkzeuge GmbH
Korzter Straße 21-25
D-42349 Wuppertal
Tel: +49 (0)2 02 / 40 45-0
E-Mail: info@wera.de

950/9 Hex-Plus 3 L-key set, metric, chrome-plated, 9 pieces

L-Keys for Hexagon Socket Screws

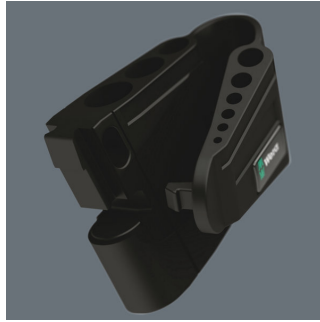


Surface protection



Chrome-plated hexagon L-keys for outstanding surface protection and long service life. High corrosion protection.

Secure hold and easy removal



The wear-resistant clip material ensures that the L-keys are securely held yet are easy to remove.

Web link

https://products.wera.de/en/l-keys_l-keys_for_hexagon_socket_screws_950_9_hex-plus_3.html

Wera - 950/9 Hex-Plus 3
05133163001 - 4013288112255

Wera Werkzeuge GmbH
Korzter Straße 21-25
D-42349 Wuppertal
Tel: +49 (0)2 02 / 40 45-0
E-Mail: info@wera.de